



Kentucky
Proud.[®]

FARM TO FRANKFORT

Workplace Delivery

DID YOU KNOW?

The Farmers Market will deliver to your office every Thursday morning for 32 weeks a year?



Farm to Frankfort offers a selection of fresh, locally produced items from over 20 vendors.

You can choose from dozens of seasonal market items each week and have your custom-order box delivered on Thursday mornings.

This is a convenient and simple way for people working in Frankfort to shop at the farmers market without having to leave work during the day.

FARMERS MARKET Workplace Delivery



All Season Long

greens + root vegetables +
summer squash + garlic +
green onions + herbs +
beef + pork + eggs +
honey + spices + teas +
soaps + baked goods

Spring Season


sweet potatoes +
snow peas + spinach +
asparagus + plant starts

Summer Season

cabbages + peppers +
tomatoes + green beans +
potatoes + sweet corn +
cucumbers + eggplant +
okra + watermelon +
pickles + jam

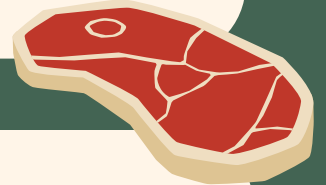
Fall Season

cabbages + peppers +
tomatoes + potatoes +
sweet corn + eggplant +
winter squash +
sweet potatoes + pickles +
jam + holiday decor and
gift items (in holiday
markets)



WHAT TO EXPECT

- Convenient access to fresh, locally produced foods
- Weekly e-newsletter with product highlights and cooking suggestions
- A simple way to support local farm and food businesses
- Great quality and friendly, personal customer service



The selection changes weekly as new produce comes in, cut flowers grow, and rotating vendors sell. If you don't see what you want one week, check the next week or reach out with what you'd love to see!



FARMERS MARKET Workplace Delivery



Weekly SCHEDULE



MONDAYS AT NOON

- Online ordering opens.
 - You will receive our weekly electronic newsletter with featured products, suggestions and ideas for seasonal ingredients as well as a link to the online store.
 - Log into your personalized account. We suggest adding your must-haves to your cart, completing your order, and then logging in again later to add any additional items. Popular items can sell out.
 - You will not be charged until the order period closes so you can change your order at any time within that window.

TUESDAYS AT 5

- Online ordering closes, place and confirm your order before this time

THURSDAY MORNINGS

- Your food box will be delivered to your workplace between 9am and 1pm depending on where your location falls on our route
- Please leave produce boxes at your office for us to pick up to be reused.

Customer **COMMITMENT**



CUSTOMERS SUPPORT THIS PROGRAM BY

- Paying a one-time \$30 registration fee to sign up for the full 32-week season of deliveries. New customers are welcome throughout the season, and we adjust the registration fee depending on how much of the season remains.
- Each week that you order, an additional \$2.50 packing & processing fee is added to your total, helping us to provide you with safe, clean - and cold, when needed packaging. You do not have to order weekly.
- Telling colleagues about your positive experience so the program can continue to grow!



FARMERS MARKET Workplace Delivery

We are Looking Forward to **YOUR PARTICIPATION!**



FRESH. LOCAL. LIVELY.



Please **CONTACT US**

Online Sales Manager - Risa Yost

sales@franklincountyfarmersmarket.org

(502) 320-3346

Participating locations include

Transportation Building | Public Service Commission |
Frankfort Regional Medical Center

Capitol Annex | Cabinet for Health and Family
Services | Investors Heritage

Mayo Underwood | Paul Sawyer Public Library | KSP
Forensic Bldg.

City Hall | Chenault & Hoge | Sower Building

Commonwealth Credit Union on Louisville Rd. | KY
Public Pensions Authority



Sign up
here



FARMERS MARKET Workplace Delivery